



**BACKHUS**

Windrow Turner

The realisation that natural resources are finite has pushed people into thinking about their lifestyle. This is why we are now more attuned to the idea of nature being a valuable asset that needs to be safeguarded for future generations. The development of sustainable solutions is the active way to contribute to a future worth living, and is something that our employees engage in on a day-to-day basis.

Karlgünter Eggersmann,  
CEO



# Navigation

- p. 4 BACKHUS A 30
- p. 6 BACKHUS A 36
- p. 8 BACKHUS A 43 - 65
- p. 10 BACKHUS A 70 - 75
- p. 12 BACKHUS Cabin equipment
- p. 14 BACKHUS Solutions
- p. 16 BACKHUS Windrow Turner comparison
- p. 18 BACKHUS LT 27 - 50

# A 30



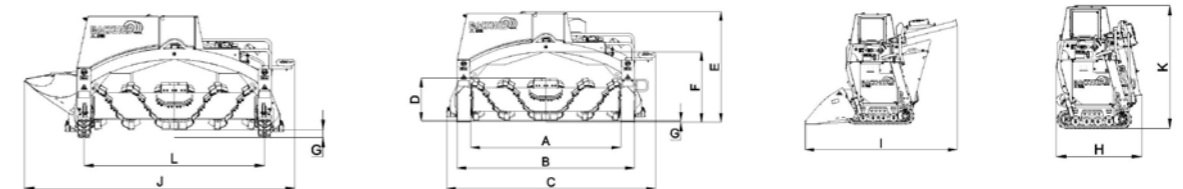
## BACKHUS A 30

The BACKHUS A 30 is a robust, compact and manoeuvrable turner that is easy to operate. It requires little maintenance and provides superior performance. The fully selfpropelled A 30 is easy to transport and assures maximum flexibility. It is ideally suited for use in the gardening, landscaping, fruitgrowing and market gardening sectors as well as for the maintenance of municipal parks.

- Heavy-duty, compact design
- Economical diesel technology
- Height-adjustable, reversible rotor
- Fully hydraulic, low-maintenance drive
- Self-propelled, no tractor necessary - optimal utilization of space available
- Easy to transport and ready for use in no time at all

## Technical Data

Working Data			
Windrow width up to	B	m	3.0
Windrow height up to		m	1.3
Windrow cross section		m <sup>2</sup>	2.2
Surface utilization*		m <sup>3</sup> /m <sup>2</sup>	0.74
Width track clearer		m	0.22
Cleaning share		%	2.2
Granular size up to		mm	150
Material movement during turning approx.		m	1.5
Turning capacity up to		m <sup>3</sup> /h	700
Rotor torque		Nm	1,300
Rotor rotation speed		min-1	400
Dimensions			
Rotor diameter	D	mm	730
Length	I	mm	2,600
Width	C	mm	3,500
Height	E	mm	1,900
Clearance width	A	mm	2,570
Clearance height	F	mm	1,200
Minimum ground clearance	G	mm	10
Maximum ground clearance	G	mm	100
Dimensions Transport			
Transport width	H	mm	1,350
Transport length	J	mm	4,200
Transport height	K	mm	1,900
Track width	L	mm	2,790
Turning diameter		mm	4,000
Speed forwards and backwards		m/min	0 - 50
Weight up to**		t	1.9
Maximum ground pressure**		kg/cm <sup>2</sup>	0.59
Engine			
Type	Yanmar 4TNV88 40 kw (53 PS) @ 2,400 rpm or Yanmar 4TNV88 35.4 kw (47.5 PS) @ 3,000 rpm		
Emission level	IV EuroMot / Tier 4 or III A EuroMot / Tier 3		
Cylinder	4		
Three-phase generator	V / A	12 / 40	
Battery	V / Ah	12 / 88	
Fuel tank	I	50	



\* At a dumping angle of 45°  
\*\* Values may differ depending upon equipment

# A 36



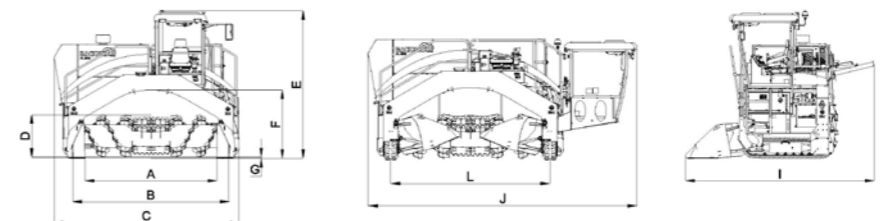
## BACKHUS A 36

A proven concept with short payback. The BACKHUS A 36 is a great value and an ideal entry level machine into professional composting at a very reasonable price. This turner is already one of the most efficient solutions within its class.

- High performance diesel engine with low emissions
- Simple handling and optimum ergonomics
- Compact transport dimensions
- Easy to maintain construction
- Low ground pressure for gentle turning

## Technical Data

Working Data			
Windrow width up to	B	m	3.6
Windrow height up to		m	1.8
Windrow cross section		m <sup>2</sup>	3.2
Surface utilization*		m <sup>3</sup> /m <sup>2</sup>	0.90
Width track clearer		m	0.28
Cleaning share		%	2.4
Granular size up to		mm	200
Material movement during turning approx.		m	2.0
Turning capacity up to		m <sup>3</sup> /h	1,500
Rotor torque		Nm	2,200
Rotor rotation speed		min <sup>-1</sup>	350
Dimensions			
Rotor diameter	D	mm	950
Length	I	mm	4,200
Width	C	mm	3,950
Height	E	mm	3,300
Clearance width	A	mm	3,060
Clearance height	F	mm	1,550
Minimum ground clearance	G	mm	30
Maximum ground clearance	G	mm	200
Dimensions Transport			
Transport width	H	mm	2,300
Transport length	J	mm	5,200
Transport height	K	mm	2,450
Track width	L	mm	3,400
Turning diameter		mm	2,250
Speed forwards and backwards		m/min	0-50
Weight up to**		t	3.5 t
Maximum ground pressure**		kg/cm <sup>3</sup>	0.5 kg/cm <sup>3</sup>
Engine			
Type			Volvo TAD 5x0 105 kw (140 PS) @ 2,300 rpm
Emission level			IV EuroMot / Tier 4 oder III A EuroMot / Tier 3
Cylinder			4
Three-phase generator		V / A	24 / 110
Battery		V / Ah	2x 12 / 145
Fuel tank		l	200



\* At a dumping angle of 45°  
\*\* Values may differ depending upon equipment

# A 43 - 65



## BACKHUS A 43 - 65

Tomorrows Windrow Turner — already today. Prepared for all the challenges of the future, the BACKHUS A-series combines highest efficiency with a maximum of optionality. Or to put it simple:

- High performance
- Low fuel consumption
- Customizable for any task
- Comfortable and easily accessible panoramic cabin
- Easy access for routine maintenance and service
- Long list of standard features
- Outstanding performance for professional application



## Technical Data

			A 43	A 50	A 55	A 60	A 65
<b>Working Data</b>							
Windrow width up to	B	m	4.3	5	5.5	6	6.5
Windrow height up to		m	2.3	2.4	2.5	2.7	2.9
Windrow cross section		m <sup>2</sup>	4.6	6.2	7.5	8.9	10.4
Surface utilization*		m <sup>3</sup> /m <sup>2</sup>	1.07	1.25	1.36	1.49	1.61
Width track clearer		m	0.4	0.4	0.4	0.4	0.4
Cleaning share		%	3.5	2.6	2.1	1.8	1.5
Granular size up to		mm	300	300	300	300	300
Material movement during turning approx.		m	2.3	2.5	2.5	3	3
Turning capacity up to		m <sup>3</sup> /h	2,800	3,600	4,000	4,600	5,000
Rotor torque		Nm	7,600	12,500	12,500	18,200	18,200
Rotor rotation speed		min-1	220	220	220	200	200
<b>Dimensions</b>							
Rotor diameter	D	mm	1,200	1,200	1,200	1,400	1,400
Length	I	mm	5,000	5,100	5,100	6,000	6,000
Width	C	mm	5,000	5,700	6,200	6,700	7,200
Height	E	mm	4,350	4,650	4,750	5,050	5,200
Clearance width	A	mm	3,736	4,436	4,936	5,436	5,936
Clearance height	F	mm	1,900	2,200	2,300	2,550	2,700
Minimum ground clearance	G	mm	30	30	30	30	30
Maximum ground clearance	G	mm	350	350	350	350	350
<b>Dimensions Transport</b>							
Transport width	H	mm	2,550	2,550	2,550	2,950	2,950
Transport length	J	mm	7,300	8,000	8,500	9,000	9,500
Transport height	K	mm	3,100	3,100	3,100	3,400	3,400
Track width	L	mm	4,320	5,020	5,520	6,080	6,580
Turning diameter		mm	5,500	6,800	7,200	8,000	8,400
Speed forwards and backwards		m/min	0-60	0-60	0-60	0-60	0-60
Weight up to**		t	10	14.0	14.5	19.0	19.5
Maximum ground pressure**		kg/cm <sup>2</sup>	0.95	1.31	1.36	1.49	1.6
<b>Engine</b>							
Type			Volvo TAD 572VE 160 kW (217 PS) @ 2,300 rpm	Volvo TAD 8x3 VE 235 kw (320 PS) @ 2,200 rpm	Volvo TAD 13x3 VE 345 kw (470 PS) @ 1,900 rpm		
Emission level	EU level IV / EPA Tier 4 or EU level III A / EPA Tier 3						
Cylinder			6	6	6	6	6
Three-phase generator	V / A		24 / 110	24 / 110	24 / 110	24 / 110	24 / 110
Battery	V / Ah		2x12 / 140	2x12 / 180	2x12 / 180	2x12 / 225	2x12 / 225
Fuel tank	I		350	500	500	750	750

\* At a dumping angle of 45°  
\*\* Values may differ depending upon equipment

# A 70 - 75



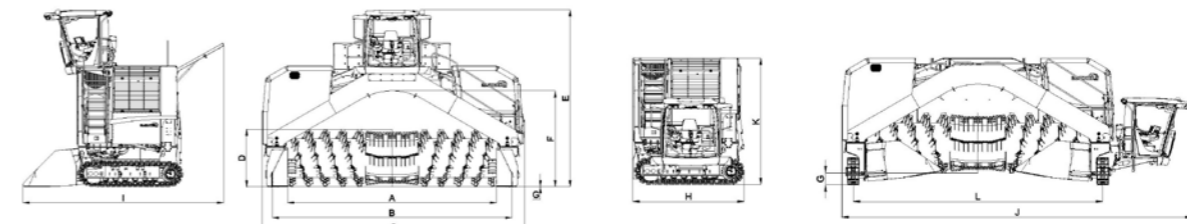
## BACKHUS A 70 - 75

Outstanding performance is a result of cutting edge technology. With an outstanding turning capacity of up to 6,800 m<sup>3</sup>/hr, extreme sturdiness and intelligent technology the BACKHUS A 70 - 75 -series meets all demands of modern turning. No matter what working width you may choose, your BACKHUS will set new standards in power, efficiency and handling.

- World's largest serial turner
- Long list of standard features as such as load adjusting automatic speed control (BTC)
- Easily accessible panorama cabin which combines convenience and high performance
- Easy access for routine maintenance and service
- High quality and outstanding efficiency even in the heaviest working conditions

## Technical Data

			A 70	A 75
<b>Working Data</b>				
Windrow width up to	B	m	7.0	7.5
Windrow height up to		m	3.2	3.3
Windrow cross section		m <sup>2</sup>	12.2	13.9
Surface utilization*		m <sup>3</sup> /m <sup>2</sup>	1.74	1.85
Width track clearer		m	0.4	0.4
Cleaning share		%	1.3	1.2
Granular size up to		mm	300	300
Material movement during turning approx.		m	3.5	3.5
Turning capacity up to		m <sup>3</sup> /h	5,800	6,800
Rotor torque		Nm	36,400	36,400
Rotor rotation speed		min <sup>-1</sup>	150	150
<b>Dimensions</b>				
Rotor diameter	D	mm	1,800	1,800
Length	I	mm	6,350	6,350
Width	C	mm	7,700	8,200
Height	E	mm	5,500	5,600
Clearance width	A	mm	6,300	6,800
Clearance height	F	mm	2,900	3,000
Minimum ground clearance	G	mm	30	30
Maximum ground clearance	G	mm	350	350
<b>Dimensions Transport</b>				
Transport width	H	mm	3,350	3,350
Transport length	J	mm	10,000	10,500
Transport height	K	mm	3,800	3,800
Track width	L	mm	6,500	7,000
Turning diameter		mm	8,900	9,300
Speed forwards and backwards		m/min	0-60	0-60
Weight up to**		t	27.5	28
Maximum ground pressure**		kg/m <sup>2</sup>	1.56	1.58
<b>Engine</b>				
Type	Volvo TAD 16x1 VE 450 kW (612 PS) @ 1,900 rpm			
Emission level	EU level 4 / EPA Tier 4			
Cylinder		m/min	6	6
Three-phase generator	V / A	t	24 / 110	24 / 110
Battery	A / Ah	kg/m <sup>2</sup>	2x12 / 225	2x12 / 225
Fuel tank	I		1000	1000

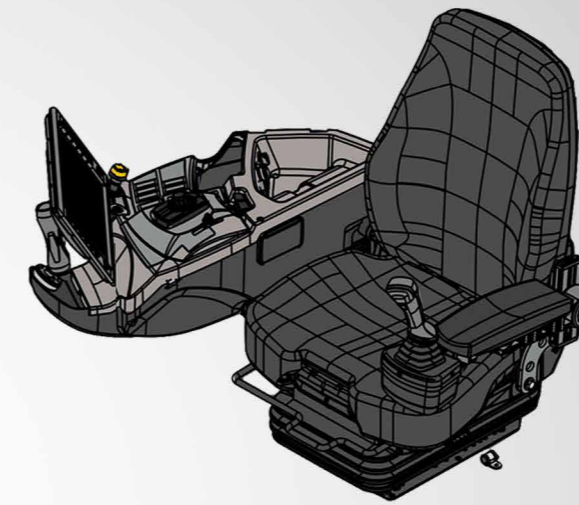


\* At a dumping angle of 45°  
\*\* Values may differ depending upon equipment

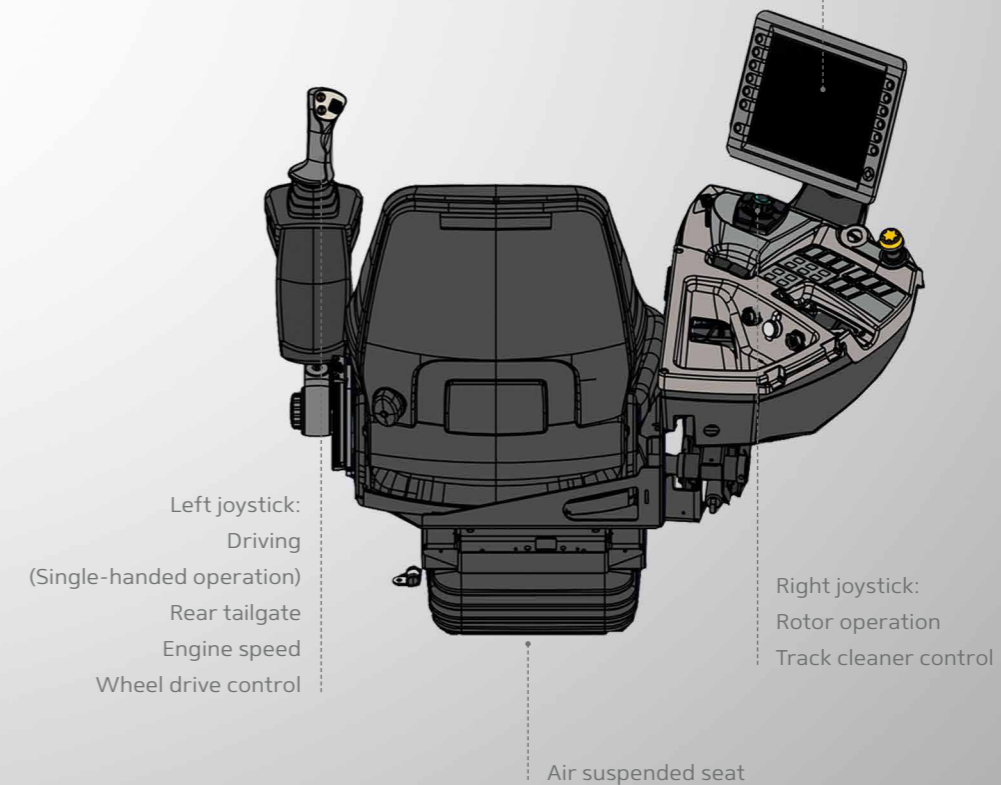


# BACKHUS A-series

Cabin equipment



Size: 12,1" color screen (18 Bit)  
Resolution: 1024x768  
Backlight: LED  
Controls: 13 keys,  
1 cross switch with pressure function, Touchscreen



# BACKHUS Solutions

Various concepts for specific waste management and composting require specific and distinctive solutions. We offer a unique set of continuously developed project solutions for your individual concepts. You will find your personal contacts at [www.backhus.com](http://www.backhus.com)

- World's largest range of optional features
- Optimising operating costs
- Solutions for emissions reduction
- Individual development for custom made projects
- Practical consulting and project solutions in dialogue with the customer

**BTC** Automatic speed control - BACKHUS Track Control (BTC)

**BMS** Maximum Power and Maximum Efficiency - BACKHUS Management System (BMS)



Additional hardening -  
armoured drum tools



Process optimization -  
injecting water during turning



BACKHUS HD S  
BACKHUS HD ME



Radio controlled -  
the hose drum with 2" or 3" connection



Professional optimization of  
the composting process -  
BACKHUS Fleece Winder



For increased traction on loose  
ground -  
the landfill undercarriage



In motion -  
the mobile cab



Intelligent space utilization -  
Side Conveyor



Reduce dust and noise -  
enclose it



# BACKHUS A-series

Windrow Turner comparison

Dimensions

Engine

Turning capacity

Windrow width & height



mm

**YANMAR**

**A 30**



length 2,600, width 3,500, height 1,900  
rotor diameter 730

Yanmar 4TNV88  
40 kw (53 PS) @ 2,400 U/min or  
Yanmar 4TNV88  
35.4 kw (47.5 PS) @ 3,000 rpm

700 m<sup>3</sup>/h

width 3.0 m  
height 1.3 m

**A 36**



length 4,200, width 3,950, height 3,300  
rotor diameter 950

**VOLVO**

Volvo TAD 5x0 105 kw  
(140 PS) @ 2,300 U/min

1,500 m<sup>3</sup>/h

width 3.6 m  
height 1.8 m

**A 43**



length 5,000, width 5,000, height 4,350  
rotor diameter 1,200

**VOLVO**

Volvo TAD 572VE 160 kW  
(217 PS) @ 2,300 rpm

2,800 m<sup>3</sup>/h

width 4.3 m  
height 2.1 m

**A 50**



length 5,100, width 5,700, height 4,650  
rotor diameter 1,200

Volvo TAD 8x3 VE  
235 kw (320 PS) @ 2,200 rpm

3,600 m<sup>3</sup>/h

width 5.0 m  
height 2.4 m

**A 55**



length 5,100, width 6,200, height 4,750  
rotor diameter 1,200

Volvo TAD 8x3 VE  
235 kw (320 PS) @ 2,200 rpm

4,000 m<sup>3</sup>/h

width 5.5 m  
height 2.5 m

**A 60**



length 6,000, width 6,700, height 5,050  
rotor diameter 1,400

Volvo TAD 13x3 VE  
345 kw (470 PS) @ 1,900 rpm

4,600 m<sup>3</sup>/h

width 6.0 m  
height 2.6 m

**A 65**



length 6,000, width 7,200, height 5,200  
rotor diameter 1,400

Volvo TAD 13x3 VE  
345 kw (470 PS) @ 1,900 rpm

5,000 m<sup>3</sup>/h

width 6.5 m  
height 3.0 m

**A 70**



length 2,600, width 3,500, height 1,900  
rotor diameter 730 mm

**VOLVO**

Volvo TAD 16x1 VE 450 kW  
(612 PS) @ 1,900 rpm

5,800 m<sup>3</sup>/h

width 7.0 m  
height 3.2 m

**A 75**



length 2,600, width 3,500, height 1,900  
rotor diameter 730 mm

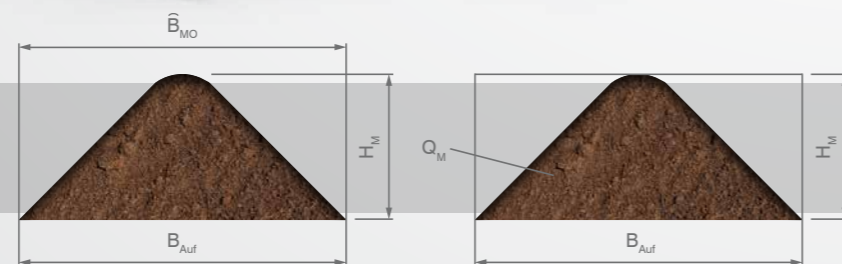
Volvo TAD 16x1 VE 450 kW  
(612 PS) @ 1,900 rpm

6,800 m<sup>3</sup>/h

width 7.5 m  
height 3.3 m

## Windrow Geometry

width of windrow surface\*:  
 $Q_M = B_{Auf} \times H_M - H_M^2$  OR  $(B_{Auf} - H_M) \times H_M$   
windrow cross section\*:  
 $B_{MO} = 0.83 \times H_M + B_{Auf}$   
\* At a dumping angle of 45°



Windrow Geometry		A 30	A 36	A 43	A 50	A 55	A 60	A 65	A 70	A 75	A 46	A 53	A 58	A 63
Windrow width	B	3.0	3.6	4.3	5.0	5.5	6.0	6.5	7.0	7.5	4.6	5.3	5.8	6.3
Windrow height	H	1.3	1.8	2.1	2.4	2.5	2.6	3.0	3.2	3.3	2.3	2.4	2.5	2.6
Width of windrow surface*	B	4.1	5.1	6.0	7.0	7.6	8.2	9.0	9.7	10.2	6.5	7.3	7.9	8.5
Windrow cross section*	Q	2.21	3.24	4.62	6.24	7.5	8.85	10.50	12.16	13.86	5.29	6.96	8.25	9.62

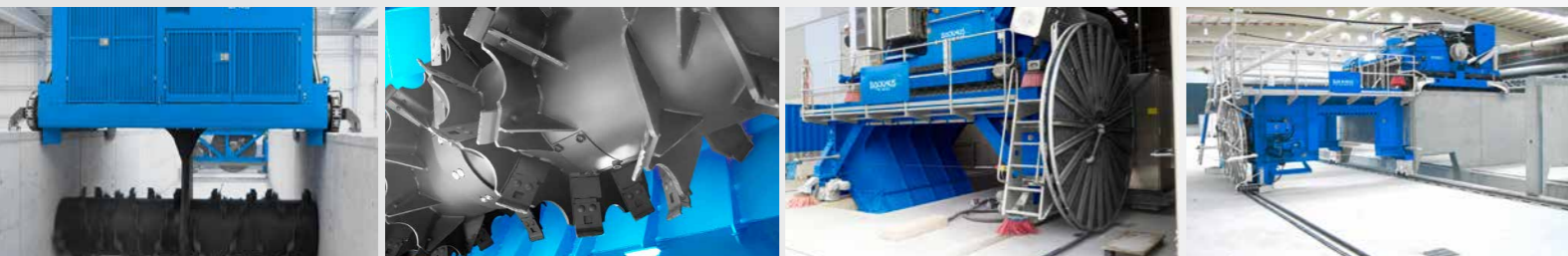
# LT 27 - 50



## BACKHUS Lane Turner

Forward thinking waste management for enclosed applications and indoor plants. The BACKHUS Lane Turner incorporates the proven plant technology of BACKHUS. It offers high efficiency and turning performance and combines great economy, low maintenance and long life for composting, bioremediation and MSW treatment between lane walls or in tunnels.

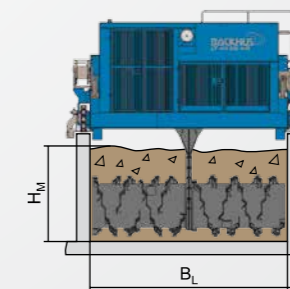
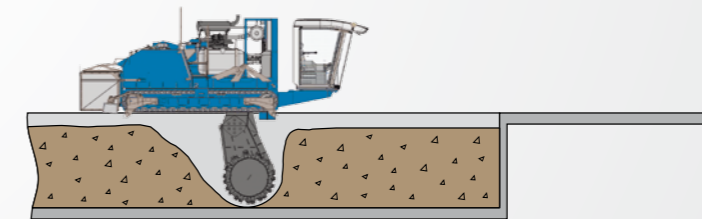
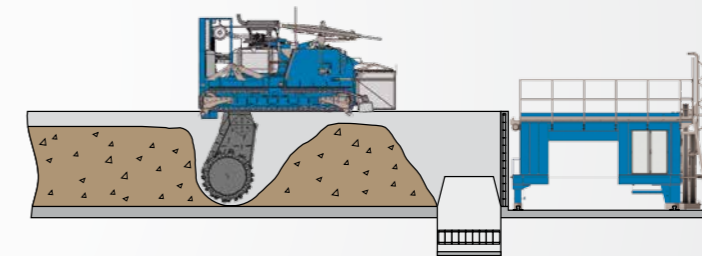
- Intelligent waste management for indoor plants
- Tailor made integration into new or existing plants
- Half or fully automatic operation of turner and material flow
- Optional electronic or diesel engine
- Highly efficient material flow and batch process



## Technical Data

			LT 27 - 36	LT 45 - 50
<b>Working Data</b>				
Lane width	B <sub>L</sub>	m	2.7 - 3.6	4.5 - 5.0
Material height ca.	H <sub>M</sub>	m	1.2 - 2.0	2.0 - 2.7
Rotor diameter		m	0.8 - 1.2	1.2 - 1.8
Material movement during turning ca.		m	1.4 - 2.2	2.2 - 3.2
Turning capacity up to		m <sup>3</sup> /h	400 - 800	2,000
<b>Engine</b>				
Type			Electric Engine	Cummins Turbo Diesel; 6 cylinders; up to 8.9 lt.
Power			app. 1x 11 kW (15 PS) + 1x 110 kW (150 PS)	up to 242 kW (325 PS)

\* At a dumping angle of 45°  
\*\* Values may differ depending upon equipment





## Eggersmann

Eggersmann GmbH

HO Halle	Technology Center Turning
Ravenna-Park 2	Rothenschlatt 18
33790 Halle (Westf.)	26203 Wardenburg
Germany	Germany
	Fon +49 4407 9133-700
	Fax +49 4407 9133-701

info@f-e.de  
www.f-e.de



ClimatePartner<sup>®</sup>  
climate neutral

Print | ID: 11242-1604-1013

Find us on

